





ELDECO

Fairway

RESERVE

3/4 BR LUXURY RESIDENCES

SECTOR – 80, GURUGRAM


LUXURY BEGINS WITH A VIEW

Wake up to sweeping views of the lush green Golf Course and the timeless majesty of the Aravallis.

Live at Eldeco Fairway Reserve. Every moment here is steeped in nature's elegance, offering a perfect blend of tranquility and luxury.

IMAGE USED FOR REPRESENTATION PURPOSE ONLY





A SANCTUARY OF STUNNING VIEWS AND ABSOLUTE PRIVACY

A haven where the vastness of the surroundings creates a sense of beauty and freedom, while the elegance of the design and the privacy of your space surround you in calm luxury.



SCENIC FROM EVERY ANGLE

Nestled among the **Aravalli Hills**, an expansive **Golf Course** and the lush Green **NSG campus**, every home here is designed to celebrate the beauty of outdoors.

These premium **3/4 BR Homes** offer an immersive living experience like no other.

MINIMAL SURFACE
VEHICULAR MOVEMENT

ONLY 2 UNITS
TO A FLOOR

900+ TREES
URBAN MINI-FOREST



LESS THAN 40 HOMES PER ACRE

Experience a lifestyle where exclusivity meets space. With less than 40 homes per acre, enjoy an un-crowded, serene environment.



OPEN VIEWS FOR EVERY HOME

Wake up to **panoramic vistas** that stretch endlessly,
bringing nature's beauty right into your home.



IMAGE USED FOR REPRESENTATION PURPOSE ONLY



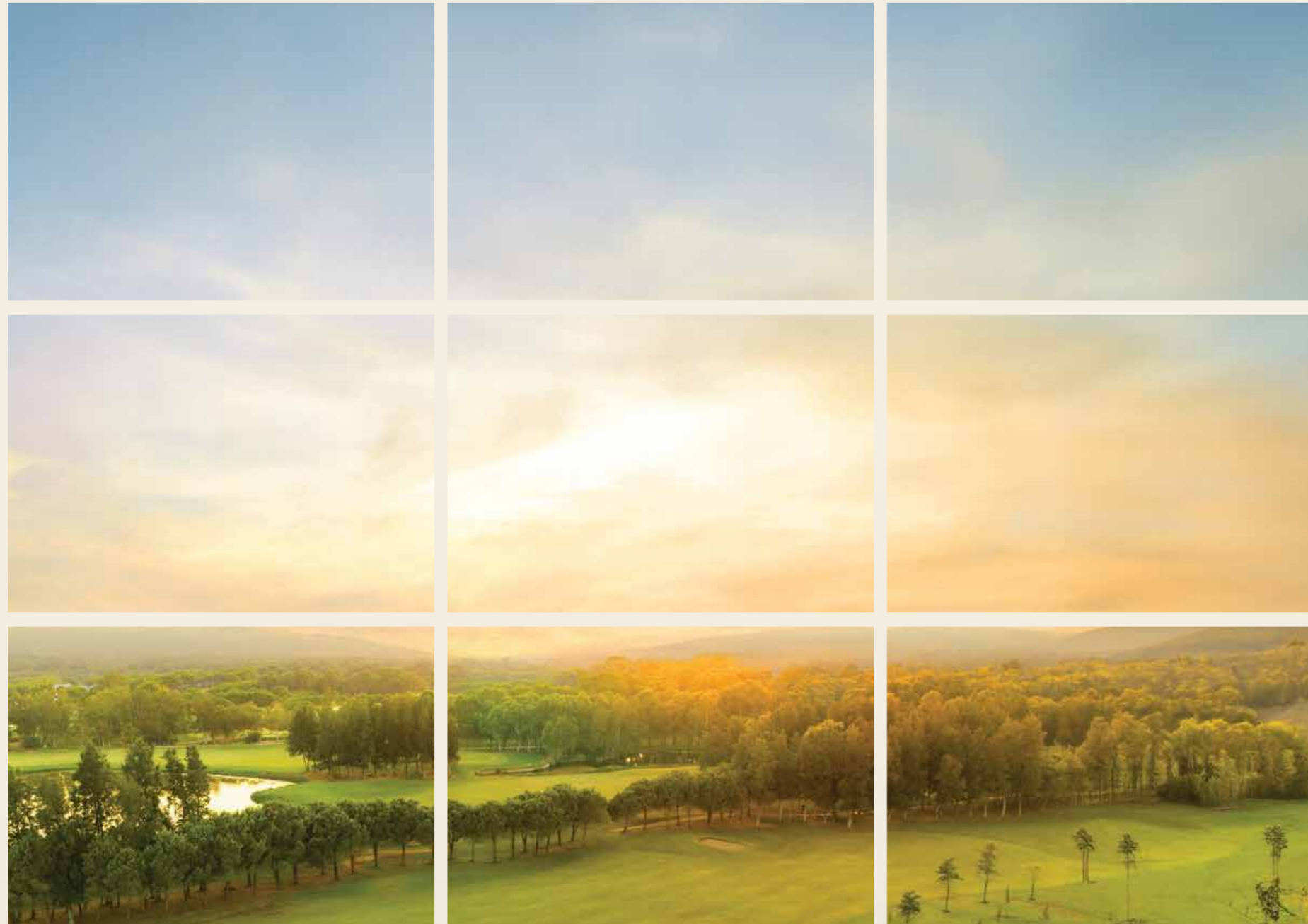


IMAGE USED FOR REPRESENTATION PURPOSE ONLY

BOUNDLESS GREENERY

The endless sea of 500+ acres of green fills the air with a refreshing scent and wraps you in its soothing embrace. In its beauty, there is a quiet, timeless power, as the greenery thrives, grows, and breathes, reminding us of the deep connection between nature and our own well-being.

OVERLOOKING GOLF COURSE | LUSH GREEN CAMPUS | SERENE ARAVALLIS | PLANNED CENTRAL GREENS



THOUGHTFULLY DESIGNED
NO TOWER
OBSTRUCTS ANOTHER

Privacy-first architecture ensures scenic views without intrusion. Your home, your personal horizon of serenity.



ARTISTIC IMPRESSION





ARTISTIC IMPRESSION

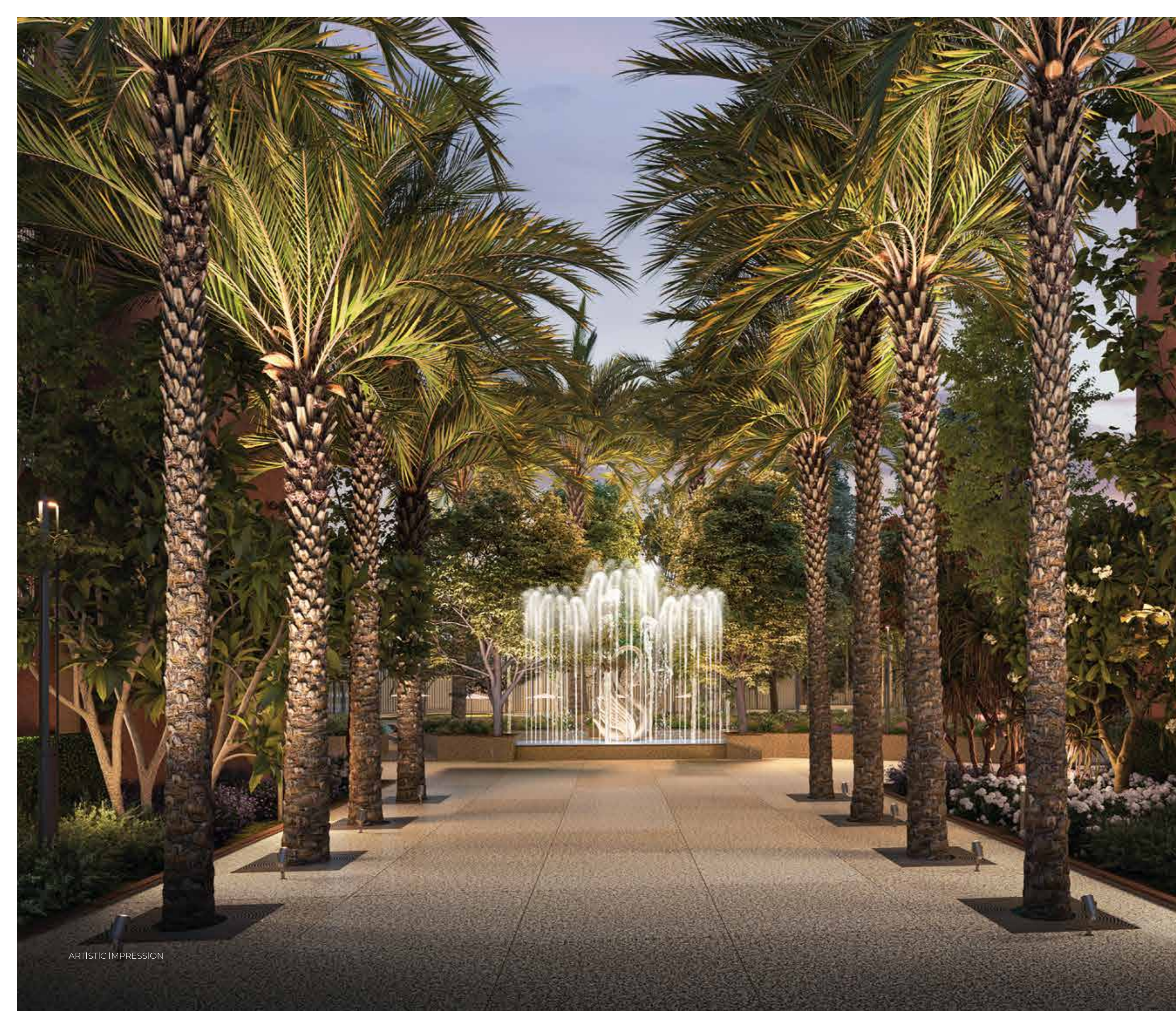
HIGH CEILINGS. HIGH LIVING STANDARDS.

Redefine luxury living with soaring **11 ft. (3.3 mtr.) floor to ceiling height** that offers an unparalleled sense of space.

Thoughtfully designed to embrace natural light and airflow, these homes ensure year-round comfort and serenity.







ARTISTIC IMPRESSION

ONLY
TWO HOMES
PER FLOOR

With just **two homes per floor**, you'll enjoy exceptional privacy and peace.

A level of exclusivity that is rare.





3 SIDE OPEN VIEWS
WITH L-SHAPED
BALCONIES



ARTISTIC IMPRESSION

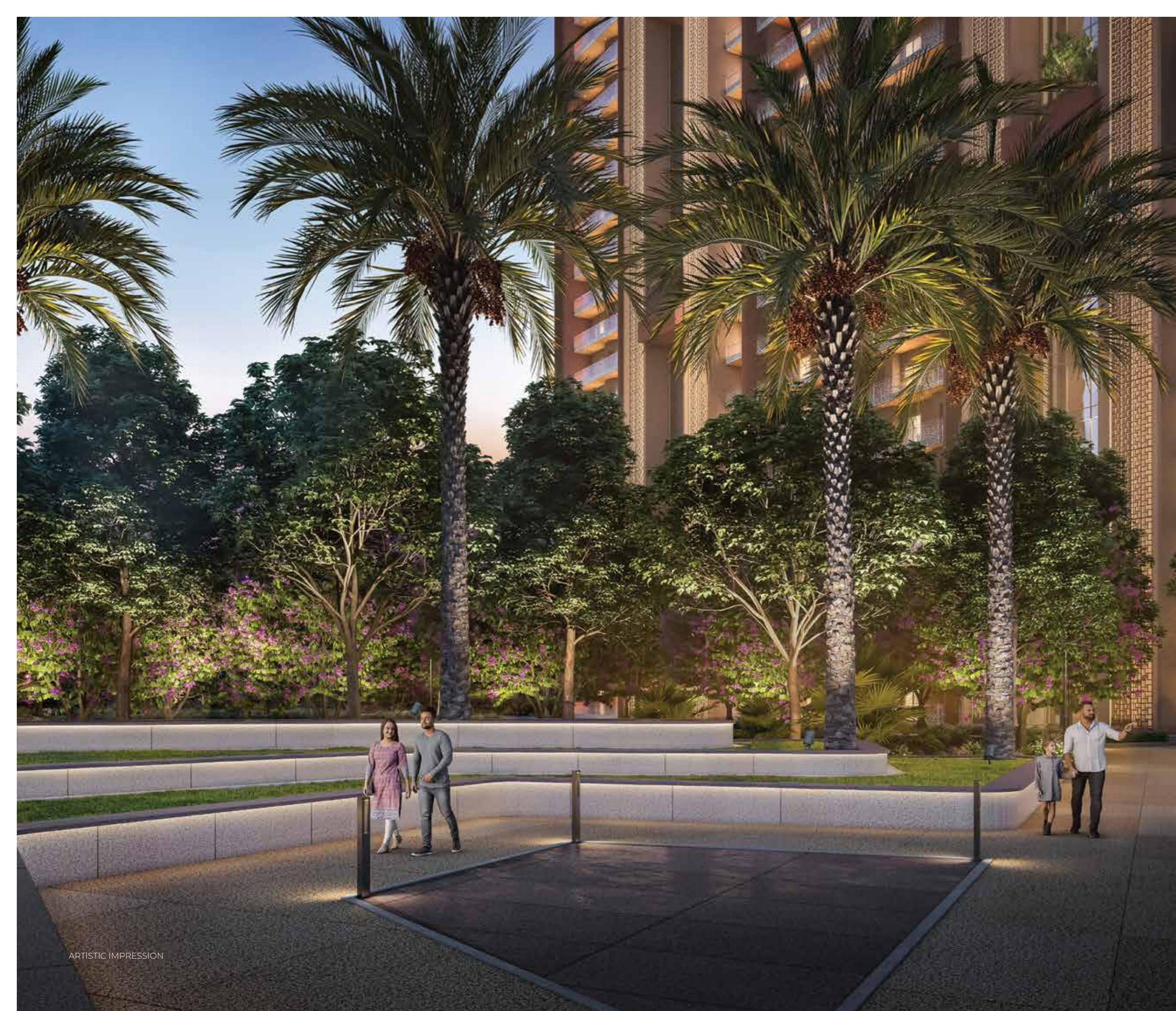




15% COVERED
85% OPEN

A community where nature takes center stage. With just 15% Ground Coverage, the expansive open spaces redefine the essence of luxury living.





ARTISTIC IMPRESSION

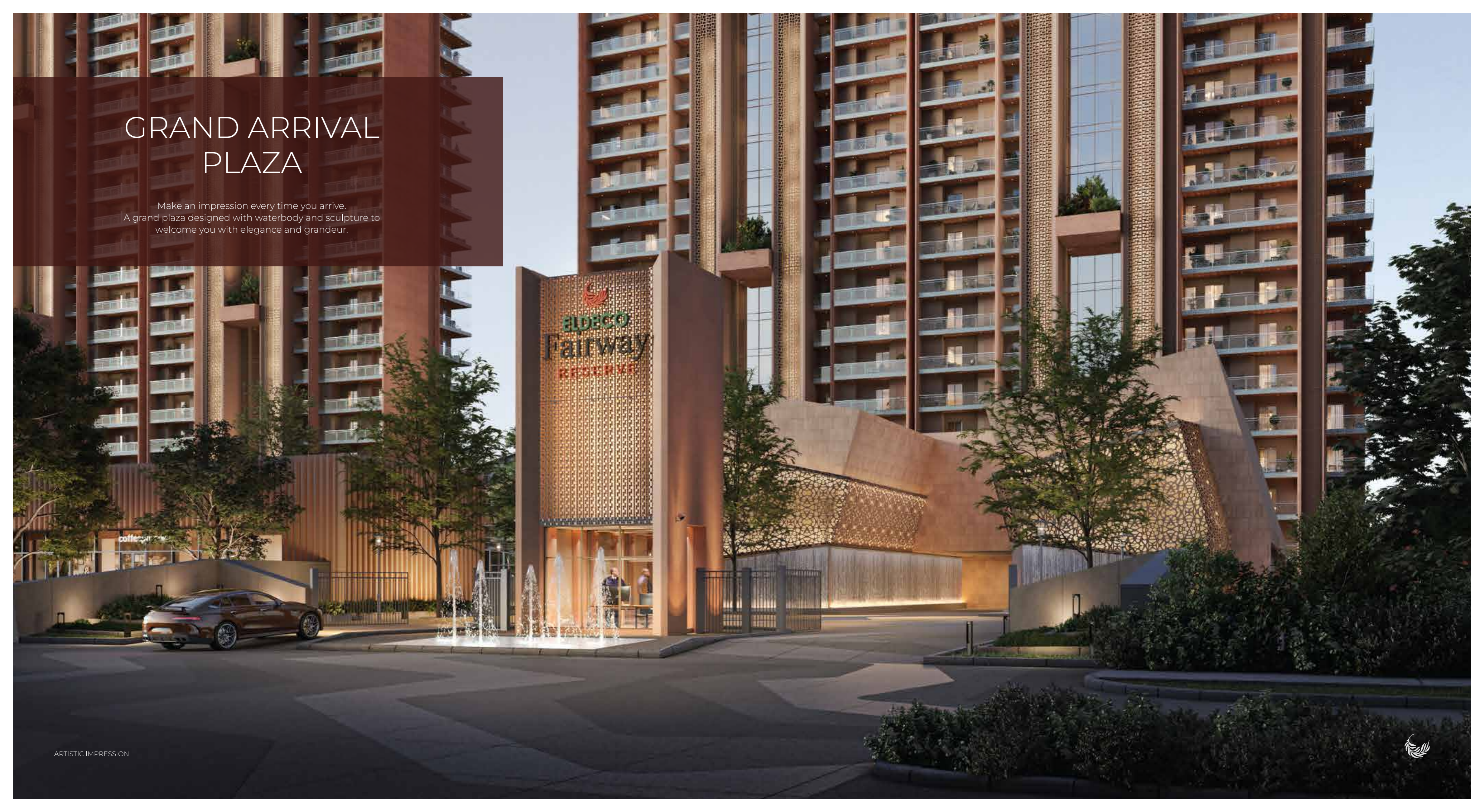
URBAN MINI FOREST WITH 900+ TREES

Step into a haven of greenery, filled with **900+ trees**. Experience a lifestyle that connects you to nature and rejuvenates your senses.

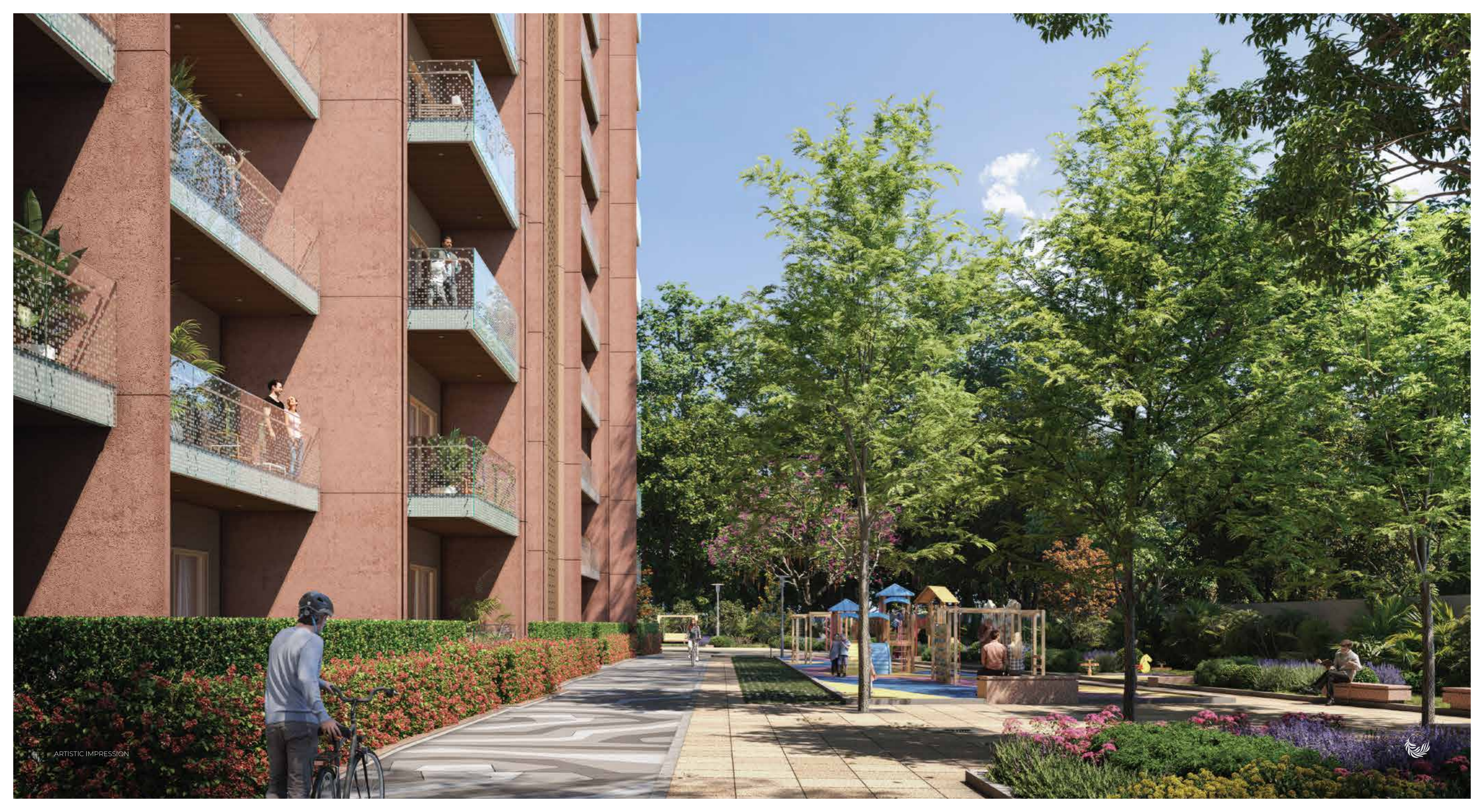


GRAND ARRIVAL PLAZA

Make an impression every time you arrive.
A grand plaza designed with waterbody and sculpture to
welcome you with elegance and grandeur.







MINIMAL SURFACE VEHICULAR MOVEMENT

Surface-level serenity, with **no cars to disrupt the tranquility**. A cleaner, quieter, and safer community for you and your loved ones.





ARTISTIC IMPRESSION





ARTISTIC IMPRESSION

THOUGHTFULLY CRAFTED THE CLUB FAIRWAY



Billiards and
Table Tennis



Restaurant



Party Lawn



Cards Room



Spa and
Steam Room



Squash Court



TV Lounge



Yoga Room



Creche



Gym



Badminton
Court



Leisure
Deck



Kids Pool

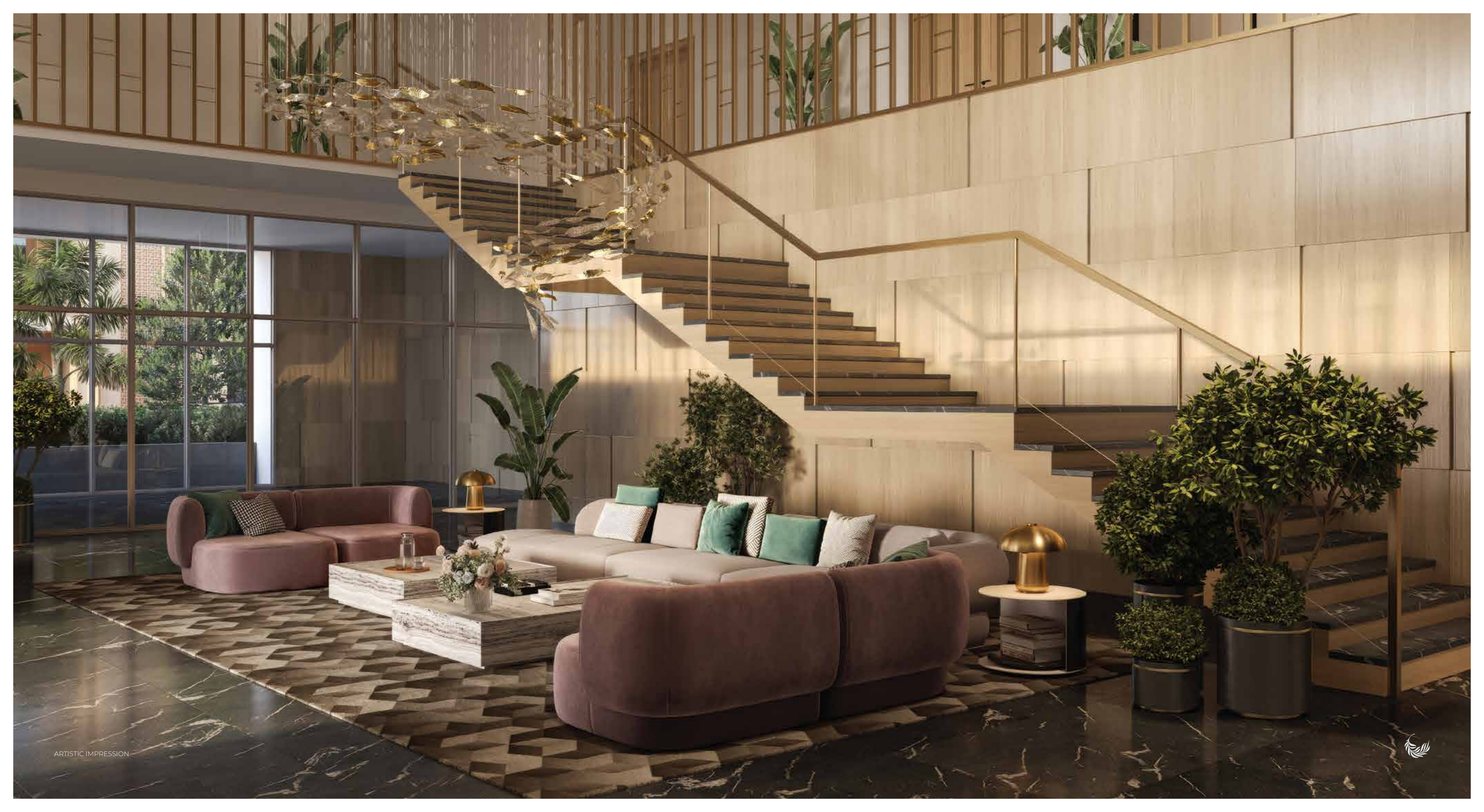


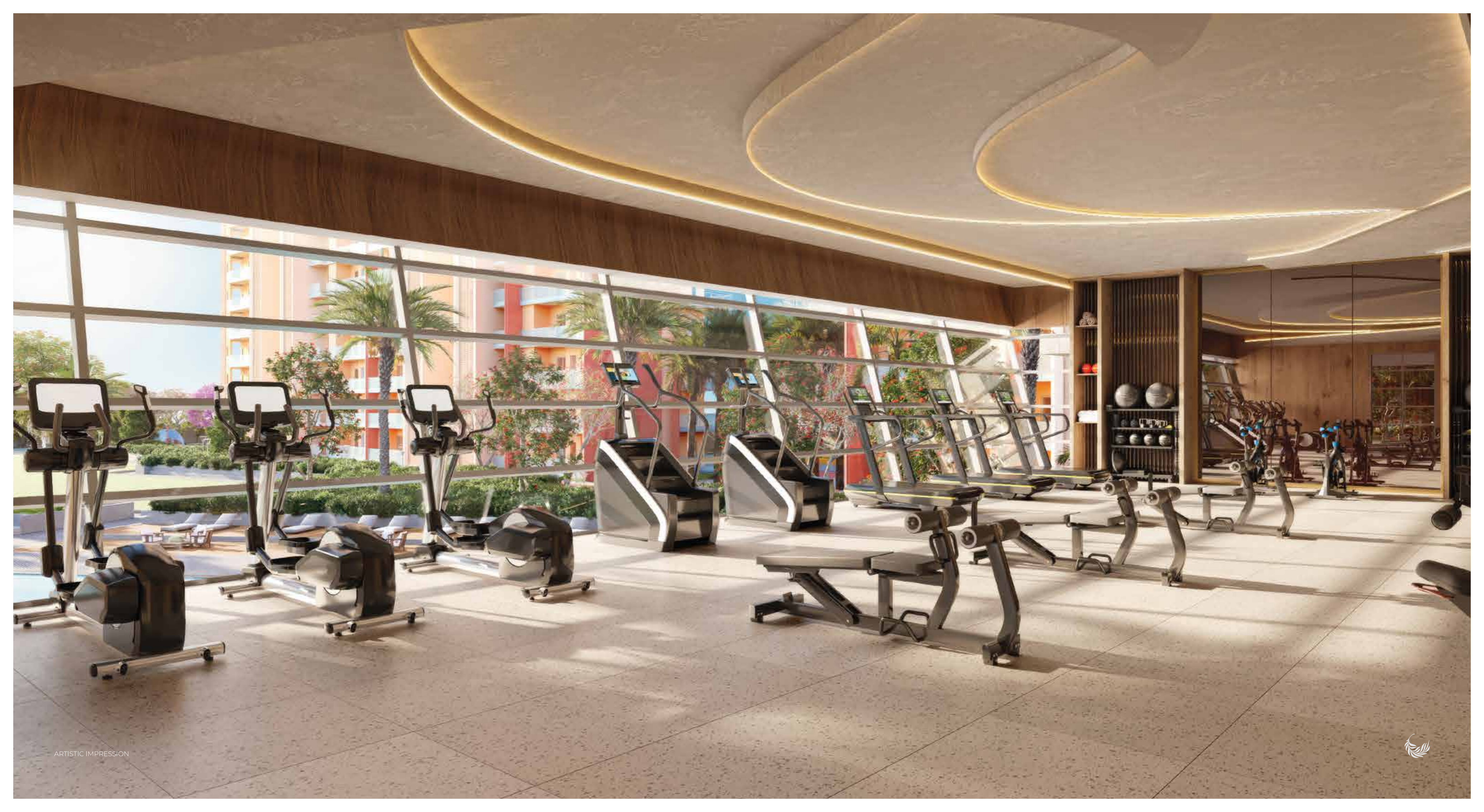
Aqua Play



Swimming
Pool










OVER 40+ WAYS TO ELEVATE YOUR LIFESTYLE


At Eldeco Fairway Reserve, luxury is not just about comfort and opulence, but about creating an atmosphere that supports physical vitality and mental clarity. Here, the blend of nature and elegance fosters a fuller lifestyle, where health flourishes effortlessly alongside beauty and indulgence.





- 


Forest Alcove
- 


Reflexology Path
- 


Cricket Practice Net
- 


Amphitheatre
- 


Cycle Track
- 


Tennis Court
- 

Senior Citizen Gazebo
- 

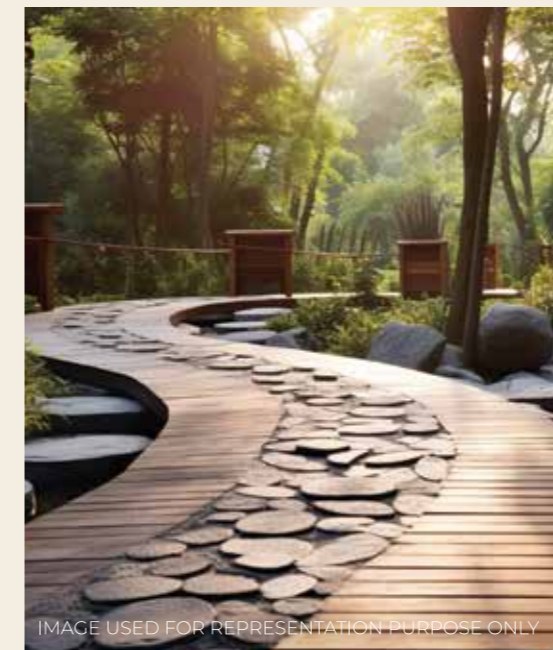
Outdoor Table Tennis
- 

Outdoor Fitness Court
- 

Basketball Court
- 

Sports Plaza
- 

Kids Play Area







FEWER PEOPLE MORE SERENITY

Fewer neighbours mean more peaceful moments and private access to greens and amenities.



SUSTAINABLY YOURS

It's a commitment from us to a future where luxury and care for the planet go hand in hand, and an invitation for you to embrace a lifestyle that values the earth's resources, choosing thoughtfully crafted experiences that honor the natural world.

Large open cutouts in basement lobbies for better ventilation

Partially solar-powered common area lights

Treated wastewater to be utilized for landscape maintenance

Rain water harvesting



MASTER PLAN

- 1. Entry / Exit
- 2. Water Feature
- 3. Sculpture
- 4. Arrival Court
- 5. Pick Up / Drop Zone
- 6. Party Lawn
- 7. Kids Pool
- 8. Aqua Play
- 9. Swimming Pool
- 10. Leisure Deck
- 11. Amphitheater
- 12. Senior Citizen Gazebo (1)
- 13. Senior Citizen Gazebo (2)
- 14. Celebration Lawn With Peripheral Seating
- 15. Tennis Court
- 16. Outdoor Table Tennis
- 17. Sports Plaza
- 18. Cricket Practice Net
- 19. Outdoor Fitness Zone
- 20. Multipurpose Court / Basket Ball Court
- 21. Pet Park
- 22. Reflexology Path
- 23. Iconic Water Feature
- 24. Kids Play (Pre-Teens)
- 25. Tree Court
- 26. Forest Alcove
- 27. Tree Avenue
- 28. Focal Water Feature
- 29. Kids Play (Tiny Tots)
- 30. Cycle Track
- 31. Tree Grove
- 32. Parking
- 33. Pedestrian Walkway

| APARTMENT TYPE | |
|--------------------|-----------------------------|
| C / C1 | 4 BHK + 4T + SERVANT |
| B / B1 / B2 | 4 BHK + 4T |
| D / D1 | 4 BHK + 4T |
| A / A1 / A2 | 3 BHK + 3T |
| E / E1 | 3 BHK + 3T |



THE WORLD
OUTSIDE
A STONE'S
THROW AWAY



ELDECO

Choose an Eldeco home.

Live Better.



ELDECO CENTRE
MALVIYA NAGAR, DELHI



ELDECO MANSIONZ
SECTOR 48, SOHNA ROAD, GURUGRAM



ELDECO ACCOLADE
SECTOR 2, SOHNA ROAD, SOHNA



ELDECO ESTATE ONE
MAIN G.T. ROAD, LUDHIANA



ELDECO COUNTY
JAWAHARPURAM, KANPUR



ELDECO GREEN MEADOWS
SECTOR Pi, GREATER NOIDA



ELDECO EDEN PARK
JAPANESE ZONE, NEEMRANA



ELDECO IMPERIA
SISANDI ROAD, LUCKNOW



ELDECO GREENS
NAKODAR ROAD, JALANDHAR

ALL IMAGES ARE ACTUAL



📍 Site Address: Sector 80, Gurugram | 🌐 www.eldecogroup.com | 📞 97 7070 8080

HARERA REG. NO. 107 OF 2024
HARERA WEBSITE: WWW.HARYANARERA.GOV.IN

DISCLAIMER: The content and visuals in this brochure are solely an artistic rendering for illustrative purposes and are not to scale, it does not constitute a legal offer or forms part of any legally binding agreement. The promoter of the project clarifies that the information provided herein are indicative in nature. Intending purchasers are advised to verify all the details independently with the respective sales team of promoter of the project regarding plans, specifications, terms of sales and payments, and other relevant details independently before making any purchase decision regarding any unit in the project.

200+ PROJECTS | 35+ YEARS | 30000+ HOMES | 20+ CITIES